

Tool model
Tool Status

N8090CB-1ML-E
active

BOSTITCH®

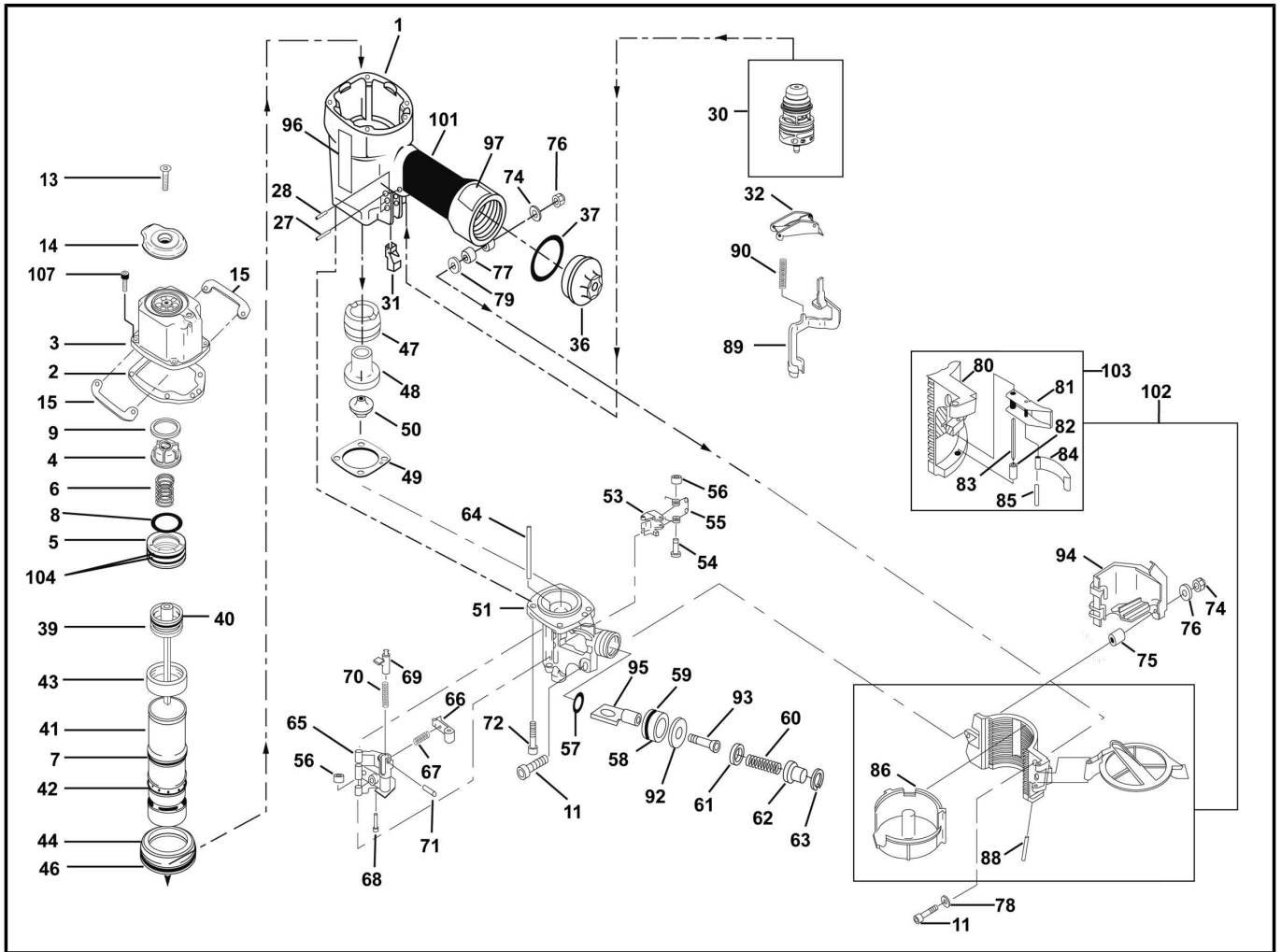


Chart Ref	Spare part code	Description	Status	Previous Part Code 1	Previous Part Code 2
1	110005	FRAME	active		
2	N70118	SEAL, CYLINDER CAP	active		
3	105590	CAP (SERVICE PART)	active		
4	N80161	PISTON STOP	active		
5	104059	HEAD VALVE	active		
6	101256	SPRING, COMPRESSION	active		
7	101236	O-RING, 2.50X.445	active		
8	MRG041630	O-RING, 1.638X.118	active		
9	T55031	RING, BUMPER	active		
11	MSC6100-40	SCREW, SOC. HD. CAP M6X1.00X40	active		
13	MSF8125-25	SCREW, SFHCS M8 X 1.25X25	active		
14	102506	COVER, EXHAUST	active		
15	102473	PROTECTOR, TOP FRAME	active		
27	102549	PIN, SPECIAL SPIROL M3XM25	active		
28	MPP030020	PIN, SPIRAL M3X20MM	active		
30	TVA6	KIT, TRIGGER VALVE	active		
31	N70145	GUIDE, ARM	active		
32	CNTK2	KIT, CONTACT TRIP CONVERSION	active		
36	N70167	CAP, END	active		
37	MRG049431	O - RING	active		
39	9R198791	PISTON SA	active		

Chart Ref	Spare part code	Description	Status	Previous Part Code 1	Previous Part Code 2
40	851439	O-RING,1.689X.190	active		
41	N80170	SLEEVE,CYLINDER	active		
42	N80169	SEAL,CHECK	active		
43	N70155	SEAL,CYLINDER	active		
44	N80168	RING,CYLINDER	active		
46	MRG084431	O-RING,3.323X.122	active		
47	N70156	BUMPER - A	active		
48	N70157	BUMPER - B	active		
49	N80354	GASKET, NOSE	active		
50	105033	GUIDE,DRIVER	fut disc		
51	9R198724	NOSE	active		
53	N80119	PAWL,FEED	active		
54	N50087	PIN,SPECIAL(STEP)	active		
55	N80120	SPRING,TORSION	active		
56	854004	WASHER,RUBBER-7	active		
57	MRG009824	O-RING,,386X.094	active		
58	N80128	PISTON, FEED	active		
59	851384	O-RING,,987X.103	active		
60	N80122	SPRING,COMPRESSION	active		
61	N80123	BUMPER,FEED PISTON	active		
62	N80124	COVER, FEED PISTON	active		
63	851383	RING, RETAINING METRIC	active		
64	N80125	PIN,SPECIAL	active		
65	N80126	DOOR	active		
66	N70149	PAWL CHECK	active		
67	854011	COMPRESSION SPRING	active		
68	N70140	PIN,SPECIAL(STEP)	active		
69	N70150	LATCH DOOR	active		
70	854013	SPRING, COMPRESSION	active		
71	MPP030012	PIN, SPIROL	active		
72	MSC8125-28	SCREW,SHCS M8X28	active		
73	MPW6.3	WASHER,PWN M6	active		
74	MHE6100-100	NUT,ESN M6X1	active		
75	105973	SPACER	active		
76	MPW6.2	WASHER.SPECIAL	active		
77	N70143	BUSHING,RUBBER	active		
78	MPW6.3	WASHER,PWN M6	active		
79	N80107	SPACER, FRAME	active		
80	N80101	BRACKET	active		
81	107455	LATCH,CANISTER	active		
82	N80106	SPACER, LATCH	active		
83	UB2126	PIN, ROLL 1/8 X 1 5/8 LONG	active		
84	N80108	SPRING,FLAT	active		
85	UB2110.4	PIN, ROLL 1/8 X 5/8	active		
86	N80103	BOTTOM,CANISTER	active		
88	UB5130	PIN,SPIROL 1/4 X 1 7/8	active		
89	N80137	ARM,CONTACT,SMOOTH TIP	active		
90	N80132	SPRING,CONTACT ARM	active		
92	LW14.2	1/4 LOCK WASHER	active		
93	MSC6100-16	SCREW,SHCS,M6X1.00X16	active		

Chart Ref	Spare part code	Description	Status	Previous Part Code 1	Previous Part Code 2
94	N80131	GUARD	active		
95	N80121	ROD,FEED PISTON	active		
96	112767	LABEL,BOSTITCH	active		
97	159912	LABEL,WARNING,COIL NAILERS	active		
101	107490	GRIP,HANDLE	active		
102	121635	ASSEMBLY,CANISTER	active		
103	121632	ASSEMBLY,BRACKET	active		
104	851438	O-RING,2.236X.115	active		
107	MSC6100-30	SCREW,SHCS,M6X1.00X30	active		