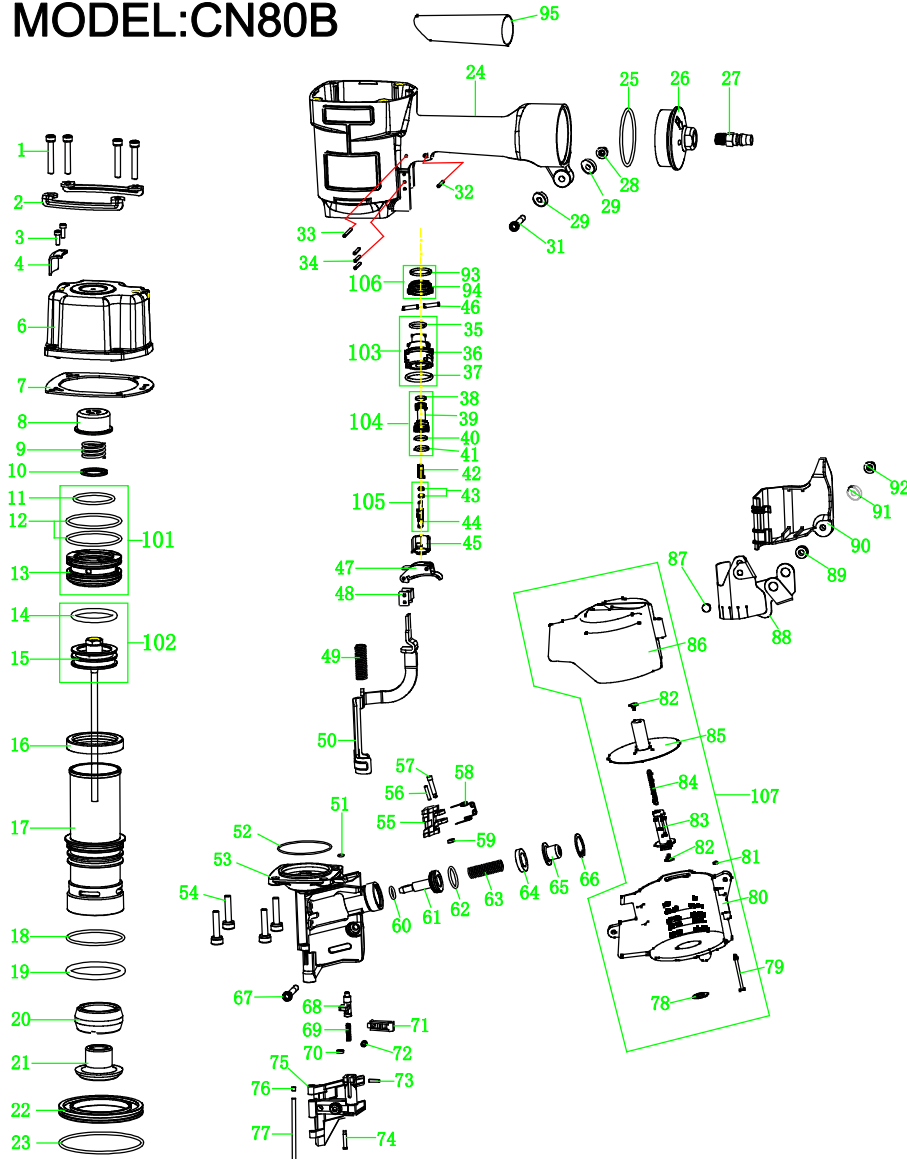


EXPLODED VIEW AND PARTS LIST

MODEL:CN80B



ITEM NO.	PART NO	PART NAME	Q' TY	ITEM NO.	PART NO	PART NAME	Q' TY
1	B01-01-060300-02	SCREW	4	54	B01-01-080300-02-NL	SCREW	4
2	AA42A-001A	PROTECTOR	2	55	AA61A-008A	FEED PAWL	1
3	B01-01-040120-02	SCREW	2	56	B02-030160-02	ROLL PIN	1
4	AA61A-007A	EXHAUST COVER	1	57	AA40A-032A	STEP PIN	1
6	AA61A-Y07A1	CYLINDER CAP	1	▲58	AA40A-057A	SPRING	1
▲7	AA42A-003A	CYLINDER CAP SEAL	1	59	AA40A-054A	RUBBER TACKER	1
8	AA42A-004A	AIRPROOF CUSHION	1	▲60	B08-009800240	O-RING	1
9	AA42A-005A	SPRING	1	61	AA61A-009A	FEED PISTON	1
10	AA42A-006A	SPRING WASHER	1	▲62	B08-020800240	O-RING	1
▲11	B08-041600300	O-RING	1	63	AA42A-023A	SPRING	1
▲12	B08-056000300	O-RING	2	64	AA42A-022A	FEED PISTON STOP	1
13	AA42A-007B	ACTIVE VALVE	1	65	AA42A-021A	SPRING COLLAR	1
▲14	B08-043000490	O-RING	1	66	B03-05-0260-02	RETAINING RING	1
▲15	AA61A-Y01A2	DRIVER	1	67	B01-01-060400-02	SCREW	1
16	AA42A-010A	CYLINDER SEAL	1	68	AA40A-023A	SHUTOFF	1
17	AA61A-002A	CYLINDER	1	69	AA40A-024A	SPRING	1
▲18	B08-056800300	O-RING	1	70	AA40A-054A	RUBBER JACKER	1
▲19	B08-055600570	O-RING	1	71	AA42A-028A	CHECK PAWL	1
▲20	AA42A-045A	BUMPER II	1	72	AA40A-055A	SPRING	1
▲21	AA42A-044A	BUMPER I	1	73	B02-030120-02	ROLL PIN	1
22	AA42A-008A	CYLINDER RING	1	74	AA42A-027A	STEP PIN	1
▲23	B08-084400310	O-RING	1	75	AA61A-003A	OPPRESSOR PLATE	1
24	AA42A-013A	BODY	1	76	AA42A-017A	STOPGAP	1
25	B08-057000300	O-RING	1	77	AA42A-018A	STRAIGHT PIN	1
26	AA42A-014A	TAIL CAP	1	78	AA40A-048A	POST RETAINER	1
27	AA06A-018A	AIR HOSE CONNECTOR	1	79	AA42B-007A	MAGAZINE PIN	1
28	B07-01-060-04	LOCKNUT	1	80	AA61B-001A	MAGAZINE	1
29	AA40A-056A	FLAT WASHER	2	81	AA40A-054A	RUBBER JACKER	1
31	B01-01-060400-02	SCREW	1	82	AA40A-046A	RECEIVER SPRING	1
32	B02-030220-02	ROLL PIN	1	83	AA61B-004A	MAGAZINE POST	1
33	B02-030320-02	ROLL PIN	1	84	AA40A-047A	TENSION SPRING	1
34	B02-030240-02	ROLL PIN	3	85	AA61B-Y02A1	NAIL SUPPORT	1
▲35	B08-011800180	O-RING	1	86	AA61B-002A	MAGAZINE COVER	1
36	AA42A-042A	VALVE	1	87	AA40A-035A	DUST COVER HOOK	1
▲37	B08-019600240	O-RING	1	88	AA42A-020A	DUST COVER	1
▲38	B08-005800190-10	O-RING	1	89	AA40A-050A	CUSHION	1
39	AA17D-006A	VALVE PISTON	1	90	AA42A-015A	MUZZLE COVER	1
▲40	B08-005800190-10	O-RING	1	91	AA40A-056A	FLAT WASHER	1
▲41	B08-008800190	O-RING	1	92	B07-01-060-02	LOCKNUT	1
42	AA40A-062A	SPRING	1	▲93	B08-016000180	O-RING	1
▲43	B08-002500140-02	O-RING	2	94	AA40A-039A	TRIGGER COVER	1
44	AA17D-007A	THIMBLE	1	95	GG08A	SHEATH	1
45	AA42A-041A	THIMBLE COVER	1				
46	AA42A-043A	TRIGGER PIN	2				
47	AA40A-Y14A1	TRIGGER SET	1	101	AA42A-Y02A2	ACTIVE VALVE SET	
48	AA42A-019A	SAFETY GUIDE	1	▲102	AA61A-Y02A2	DRIVER SET	
49	AA42A-038A	SPRING	1	103	AA42A-Y14A1	VALVE SET	
50	AA61A-006A	SAFETY	1	104	AA17D-Y05A1	VALVE PISTON SET	
▲51	B08-004000150	O-RING	1	105	AA17D-Y06A1	THIMBLE SET	
▲52	B08-057000150	O-RING	1	106	AA40A-Y15A1	TRIGGER COVER SET	
53	AA61A-001A	MUZZLE	1	107	AA61B-Y01A1	MAGAZINE SET	

Remark: Items with "▲" are vulnerable parts

GBA61B00302
B1