

## MAINTENANCE

### NOTE:

The information contained in this Manual is designed to assist you in the safe maintenance of the Nailer.

Some illustrations in this Manual may show details or attachments that differ from those on your own Nailer.

## MAINTENANCE AND INSPECTION

### Read section titled SAFETY

#### WARNING

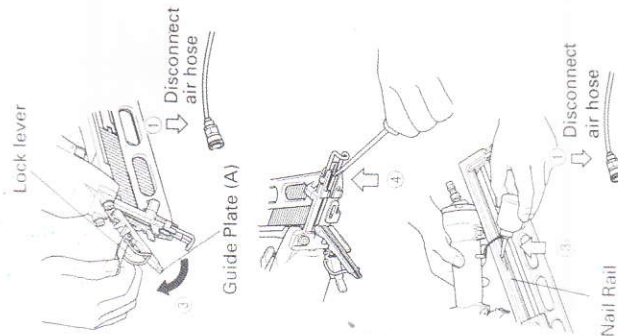
Disconnect air hose and remove nails from Nailer when:

- doing maintenance and inspection;
- clearing a jam.

### 1. Clearing a jam

Remove a jammed nail in the following order:

- DISCONNECT AIR HOSE.
- Remove all nails.
- Remove the lock lever and open guide plate (A).
- Remove the jammed nail with a slotted Head screwdriver.
- Close guide plate A and latch.
- In case of frequent jam, contact a authorized service center.



### 2. Inspecting the magazine.

- DISCONNECT AIR HOSE.
- Clean the magazine. Remove dust which may have accumulated in the magazine.
- Lubricate the nail rail with pneumatic tool lubricant.

### 3. Storing

When not in use for an extended period, apply a thin coat of the lubricant to the steel parts to avoid rust.

Do not store the Nailer in a cold weather environment.

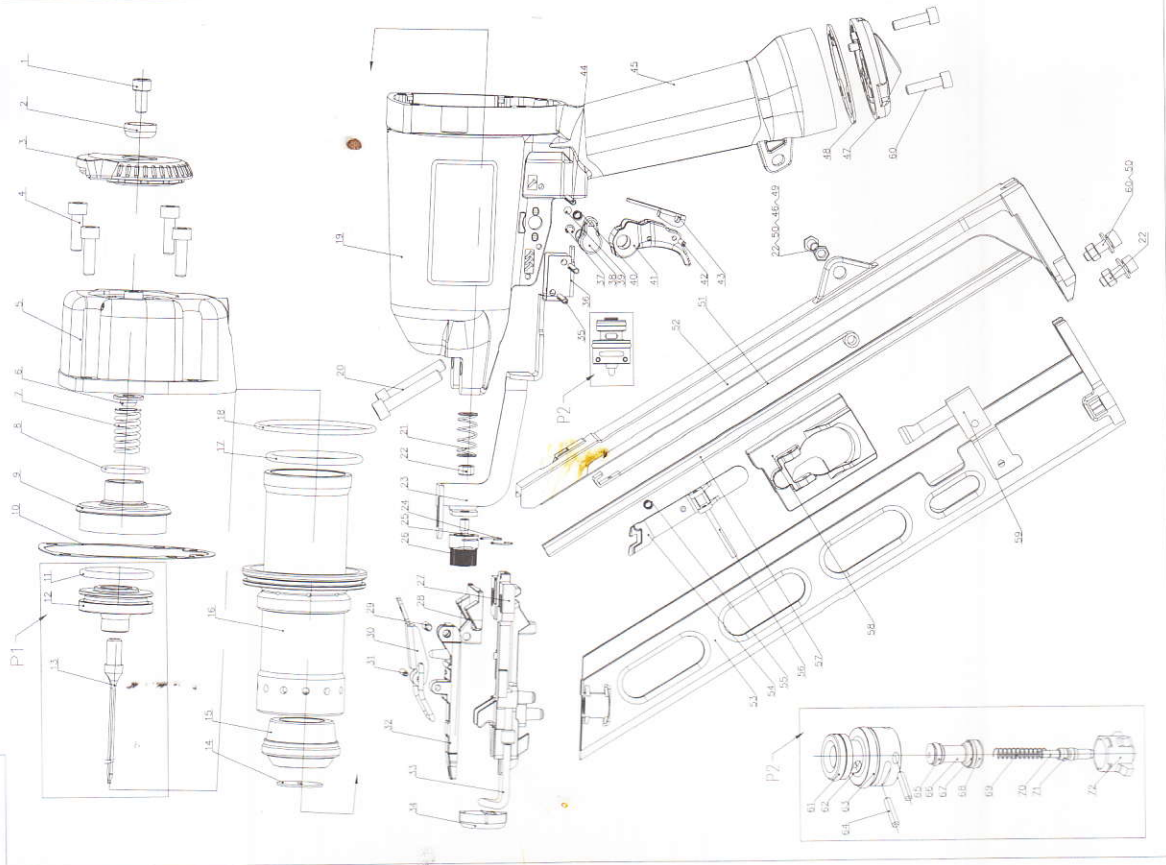
Keep the Nailer in a warm area.

When not in use, the Nailer should be stored in a warm and dry place.

Keep out of reach children.

## PARTS DRAWING

NT65



## NT65 PARTS LIST

NO.	ITEM	NO.	ITEM
1	BOLT	38	ADJUSTABLE AXIS
2	EXHAUST COVER HOLDER	39	STEEL BALL
3	EXHAUST COVER	40	SPRING
4	BOLT	41	TRIGGER
5	CYLINDER CAP	42	PIN
6	SPRING SEAT	43	TRIGGER PLUNGING PLATE
7	SPRING	44	PIN
8	O-RING	45	RUBBER GRIP
9	HEAD VALVE	46	BOLT
10	CYLINDER CAP SEAL	47	END CAP
11	O-RING	48	END CAP SEAL
12	DRIVE PISTON	49	GUIDE PIPE
13	DRIVE BLADE	50	WASHER
14	GUIDE PLATE	51	CURL SPRING BELT
15	BUMPER	52	MAGAZINE FRAME
16	CYLINDER	53	MAGAZINE
17	O-RING	54	PUSHING BAR
18	O-RING	55	PUSHING BAR SPRING
19	BODY	56	PIN
20	BOLT	57	MAGAZINE GUIDE BAR
21	SPRING	58	PUSHING BAR SEAT
22	NUT	59	RETAINING PLATE
23	SAFETY LEVER	60	BOLT
24	RETAINER	61	O-RING
25	BOLT	62	TRIGGER VALVE CAGE
26	ADJUSTABLE NUT	63	O-RING
27	NOSE	64	PIN
28	FIXING SEAT	65	O-RING
29	PIN	66	TRIGGER VALVE STEM
30	WRENCH SET	67	O-RING
31	PIN	68	O-RING
32	DOOR	69	SPRING
33	EXTENSION BAR	70	TRIGGER VALVE PLUNGER
34	NOSE CAP	71	O-RING
35	PIN	72	TRIGGER VALVE UPPER
36	SAFETY LEVEL RECEIVER	P1	DRIVER ASSEMBLY
37	AXIS RETAINER	P2	TRIGGER ASSEMBLY