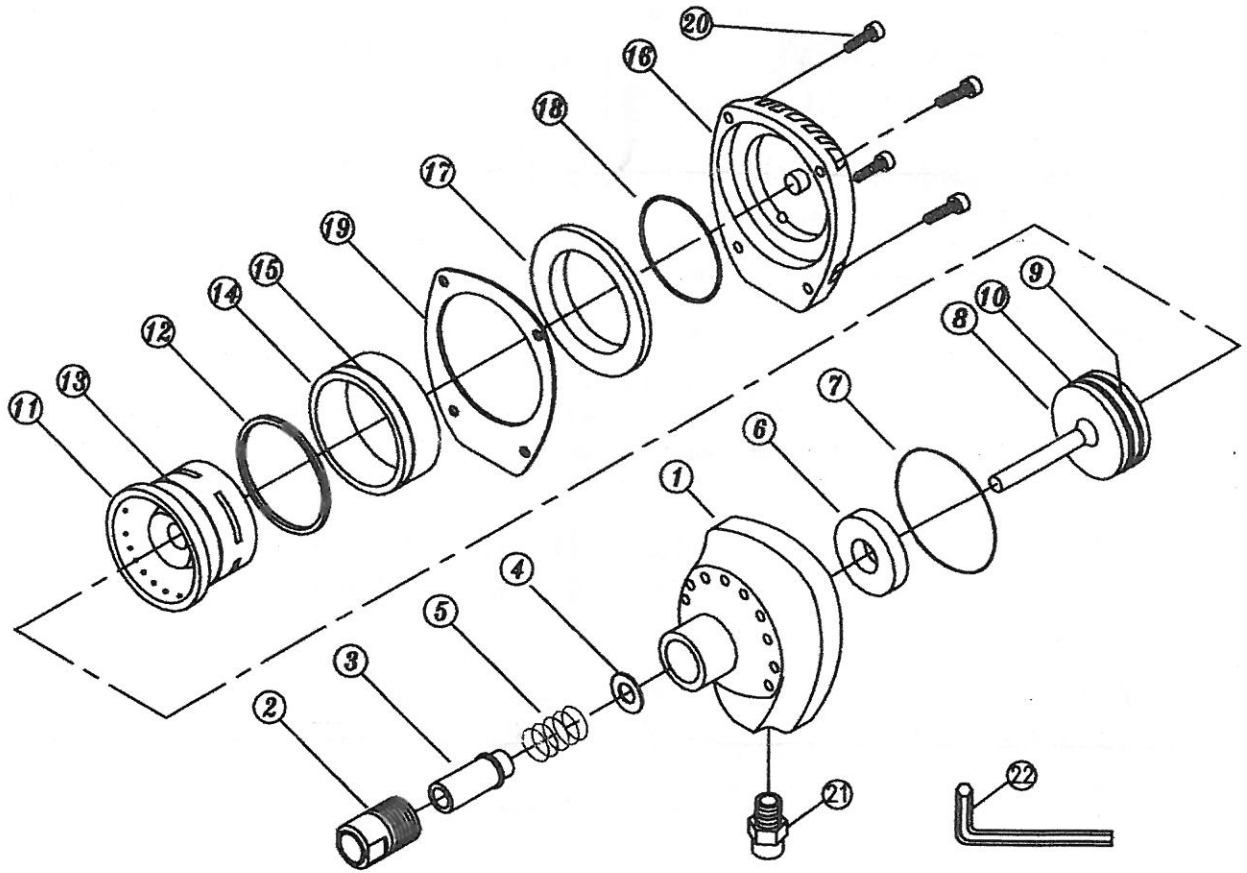


HN100 AIR SPEEDY NAILER



INDEX NO.	PART NO.	DESCRIPTION	NO. REQ'D	INDEX NO.	PART NO.	DESCRIPTION	NO. REQ'D
1	88101	Body	1	21	88123	Air Inlet	1
2	88102A1	Guide Box	1	22	88124	Hex Wrench	1
3	88103A3	Guide Bushing	1				
4	88104	Spring Washer	1				
5	88105	Spring	1				
6	88106	Damping Rubber	1				
7	88107	"O" Ring	1				
8	88108	Piston	1				
9	88110	"O" Ring	1				
10	88111	"O" Ring	1				
11	88112	Cylinder	1				
12	93909	Rubber Ring	1				
13	88115	"O" Ring	1				
14	88116	Valve	1				
15	88117	"O" Ring	1				
16	88118	Cover	1				
17	88119	Valve Packing	1				
18	88120	"O" Ring	1				
19	88121	Gasket	1				
20	88122	Screw	4				

1. AIR PRESSURE :

The Air Speedy Nailer requires a minimum air pressure of 50 lbs. and a maximum air pressure of 125 lbs. Various nail sizes require different air pressure for best results as follows:

5d and 8d	50 to 80 lbs.
8d and 10d	80 to 100 lbs.
16d and 30d	100 to 115 lbs.
60d and 70d	115 to 125 lbs.

OPERATION ABOVE 125 LBS. AIR PRESSURE WILL CAUSE INTERNAL DAMAGE

2. AIR LINES AND FITTINGS :

The hose and fitting size of the Air Speedy Nailer is 3/8". Although, the tool uses only 2 to 4 C.F.M. at maximum operation speed, you should insure maximum air flow for proper operation. If air flow is restricted it is recommended that you install a 3 to 5 gal. surge tank within 15 feet of the work area.

3. AIR FILTER AND LUBRICATOR :

Since the Air Speedy Nailer is a high speed pneumatic tool, trouble free use is best obtained by using a 3/8" or larger air filter and lubricator.

CAUTION: WARRANTY NOT HONORED UNLESS TOOL IS USED WITH FILTER AND LUBRICATOR.

OPERATION

Remember, your Air Speedy Nailer is an automatic hammer and NOT A GUN. Therefore, it has no trigger. It starts automatically when the driver presses against the nail head; it automatically stops when the nail head no longer touches the driver. The operator need only apply a very slight amount of pressure to activate the tool.

POSITIONING

Hold the nail with the left (or right) hand in the same manner as if you were using a common hammer. With your other hand simply place the tool in a straight line with the direction in which you intend to drive the nail, and locate guide onto the nail head, gently pushing the Air Speedy Nailer against the nail head. When the nail is driven it will automatically stop. Repeat the procedure with another nail.

AIR ESCAPING FROM TOOL :

1. The Air Speedy Nailer may be accidentally dropped after the air pressure has been shut off. Due to the shock, the internal cycling mechanism may assume a mid-cycling position, and like a valve, allow the air to pass through without energizing the oscillating action. No danger or damage can occur. However, the unit will remain inoperative when this occurs. To stop the escaping air, abruptly slap the cap side of the Air Speedy Nailer into the palm of your hand with enough speed of impact to reset the internal piston. The escaping air will immediately stop and your unit is ready for immediate use.

2. Check Cap screws with proper size allen wrench making sure they are all tight.

OIL

Always use a NON-DETERGENT OIL, 6 TO 10 weight for lubrication.

WHEN CLEANING YOUR AIR SPEEDY NAILER—AVOID THE USE OF SOLVENTS ON ALL RUBBER PARTS.